



C1 REPORT DESIGNER

First Time Setup

Accruent Confidential and Proprietary, copyright 2025. All rights reserved.

This material contains confidential information that is proprietary to, and the property of, Accruent, LLC. Any unauthorized use, duplication, or disclosure of this material, in whole or in part, is prohibited.

No part of this publication may be reproduced, recorded, or stored in a retrieval system or transmitted in any form or by any means—whether electronic, mechanical, photographic, or otherwise—without the written permission of Accruent, LLC.

The information contained in this document is subject to change without notice. Accruent makes no warranty of any kind with regards to this material, including, but not limited to, the implied warranties of merchantability and fitness for a particular purpose.

Accruent, or any of its subsidiaries, shall not be liable for errors contained herein or for incidental or consequential damages in connection with the furnishing, performance, or use of this material.

Table of Contents

Overview

 Purpose

First Time Setup

 Instructions

 Common Initial Soft Lock

Info / Contact Support

Overview

Purpose

This document covers the steps to successfully install C1 Report Designer.

It also provides information and resolution to a common soft lock users might encounter upon launching the C1 app.

First Time Setup

Instructions

1: Open the C1 Report Designer app.

C:\Program Files (x86)\FRSoft\TMS Report Designer

2: Click the red icon in the upper left corner of the application.

3: Click on the *Options* button.

4: In the *TMS Data Services URL* field at the bottom, select the appropriate *http/https* and enter the application URL.

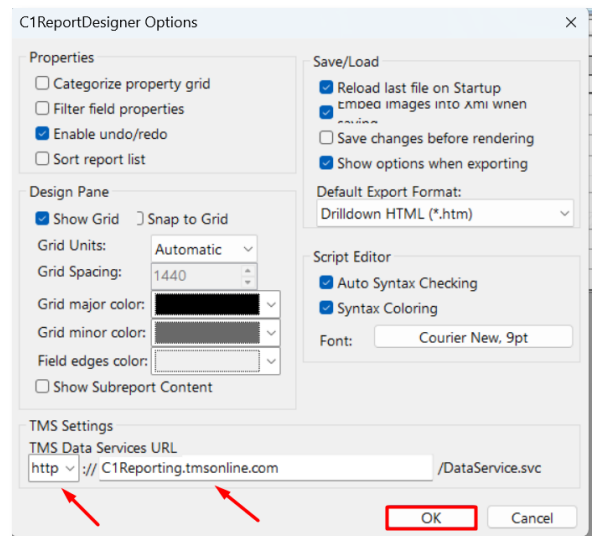
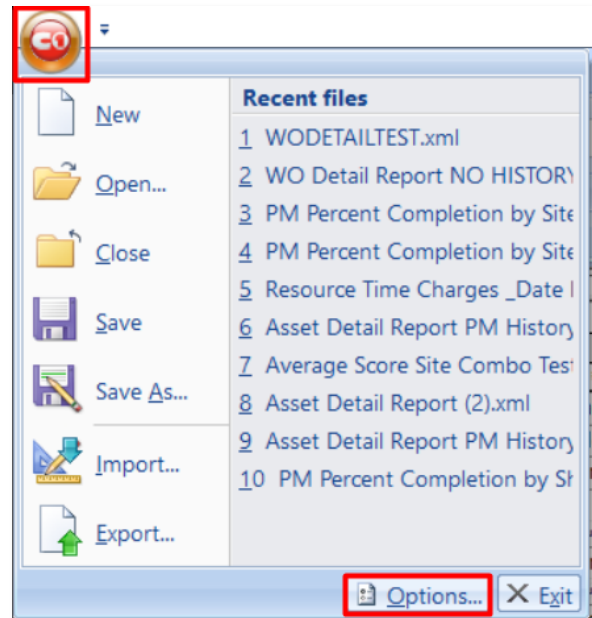
- **TMS Onsite:**

Enter the app address replacing */tmsclient* with */tmsServiceSuite*.

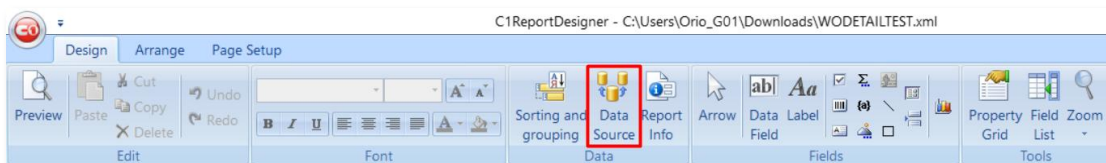
- **TMS Online**

Enter *C1Reporting.tmsonline.com*

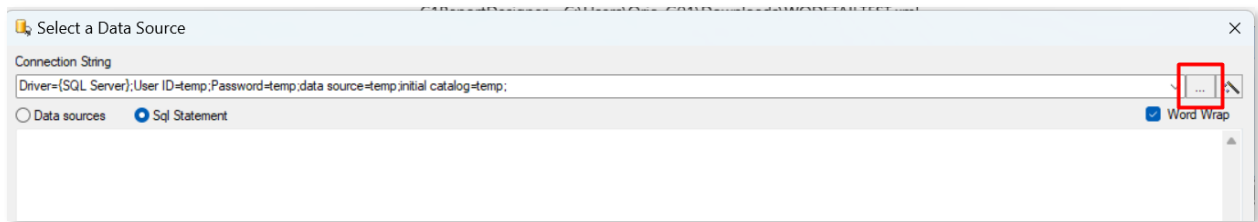
5: Click the *OK* button.



6: Click on the *Data Source* button on the toolbar.



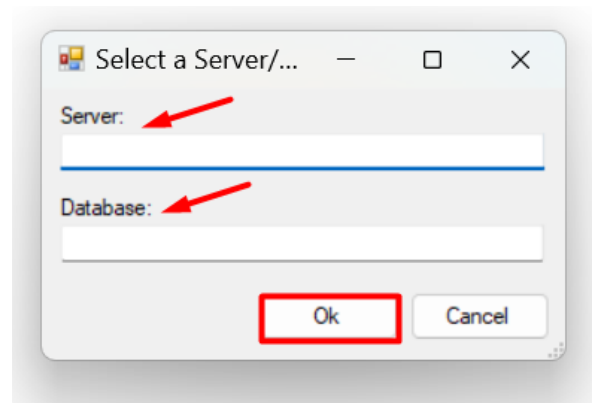
7: Click the *ellipsis* button to the right of the *Connection String* field.



8: Enter server name into the *Server* field.

9: Enter the database name into the *Database* field.

10: Click the *Ok* button.



Common Initial Soft Lock

When launching C1 Report Designer, you might be stuck on a logo screen that seems to freeze the application.

In cases like this, you might notice a border shadow behind the logo. This indicates that there is a pop-up message behind the logo that requires that you acknowledge it.

Click *Enter* to solve this.



Note: You can also use *CTRL+SHIFT+ESC* to launch Task Manager, expand the row for C1 and right click on the expanded row for the SQL errors, then select "End Task".

Info / Contact Support

C1 REPORT DESIGNER – First Time Setup

March 2025

Accruent, LLC
Domain 3, 11501 Domain Drive Suite 160,
Austin, TX 78758

Contact Accruent Support

Phone: (877) 345 3999 ext 1 (7a-7p M-F CST)

Email: TmsSupport@accruent.com

Community Portal: <http://accruent-support.force.com/healthcare>

Chat: <https://www.accruent.com/customer-support>